

THERMAL Deburring

ATL Anlagentechnik Luhden GmbH - Machines for thermal deburring

Data Sheet *iTEM400*

Dimensions

Length	3,800 mm
Width	2,500 mm
Height	2,600 mm
Weight	15,000 kg

Max. component size

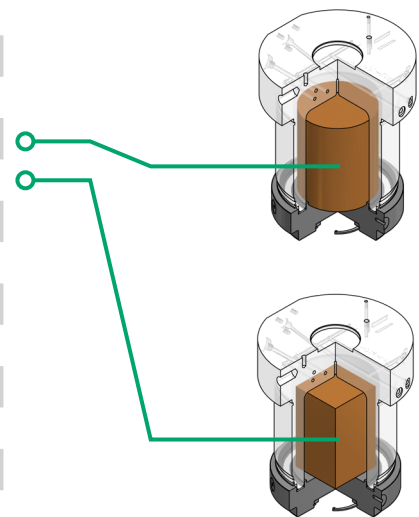
Cylindric components	Ø 395 x H 280 mm
Quadratic components	275 x 275 x 280 mm

Electric power supply

Power requirement	approx. 30 kVA
Line voltage	400 V/N/PE ~ 50 Hz

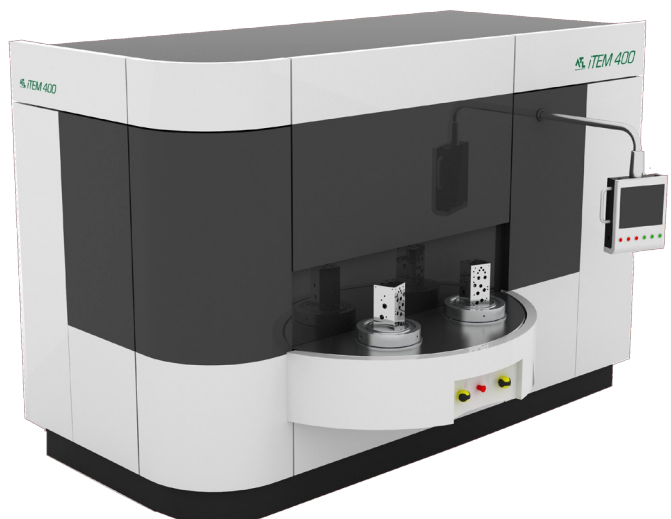
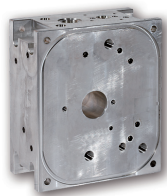
Deburring chamber

Diameter	250 mm	320 mm	400 mm
Height	300 mm	300 mm	300 mm
Max. gas inflated pressure	23 bar	16 bar	12 bar



Standard Equipment

- Rotary indexing table: 5 stations
- Control system: SIEMENS PLC with touch-screen
- Cycle times 5 stations single shot: 30 - 60 seconds
- Cycle times 5 stations double shot: 90 - 120 seconds
- Operating gas: Oxygen and methane (or hydrogen)
- Safety arrangement: TÜV certified, ATEX, CE marking, gas monitoring system



THERMAL Deburring

ATL Anlagentechnik Luhden GmbH - Machines for thermal deburring

Datenblatt Product Overview

	<i>iTEM250 SC</i>	<i>TEM320 SC</i>	<i>iTEM400</i>	<i>iTEM400/600</i>	<i>iTEMPlastics</i>
Dimensions					
Length	3,100 mm	3,100 mm	3,800 mm	3,800 mm	2,600 mm
Width	1,800 mm	1,800 mm	1,800 mm	1,800 mm	1,610 mm
Overall width	2,400 mm	2,400 mm	2,500 mm	2,500 mm	1,610 mm
Height	2,600 mm	2,600 mm	2,600 mm	2,850 mm	2,600 mm
Working height	1,100 mm	1,100 mm	990 mm	1,380 mm	810 mm
Weight	10,000 kg	10,000 kg	15,000 kg	17,000 kg	4,000 kg
Max. component size					
Cylindric components	Ø 240 x H 280 mm	Ø 310 x H 280 mm	Ø 395 x H 280 mm	Ø 395 x H 580 mm	
Quadratic components	170 x 170 x 280 mm	220 x 220 x 280 mm	275 x 275 x 280 mm	275 x 275 x 580 mm	400 x 400 x 800 mm
Electric power supply					
Power requirement	approx. 30 kVA	approx. 30 kVA	approx. 30 kVA	approx. 30 kVA	approx. 20 kVA
Line voltage	400 V/N/PE ~ 50 Hz				
Control voltage	24 V DC				
Operating media					
Medium 1	methane*	methane*	methane*	methane*	hydrogen
Medium 2	oxygen	oxygen	oxygen	oxygen	oxygen

* Hydrogen and natural gas are also applicable. Natural gas may not contain more than 2% of inert gas and in addition, a natural gas compressor is needed.

